

BEATRICE LOLA THL 1

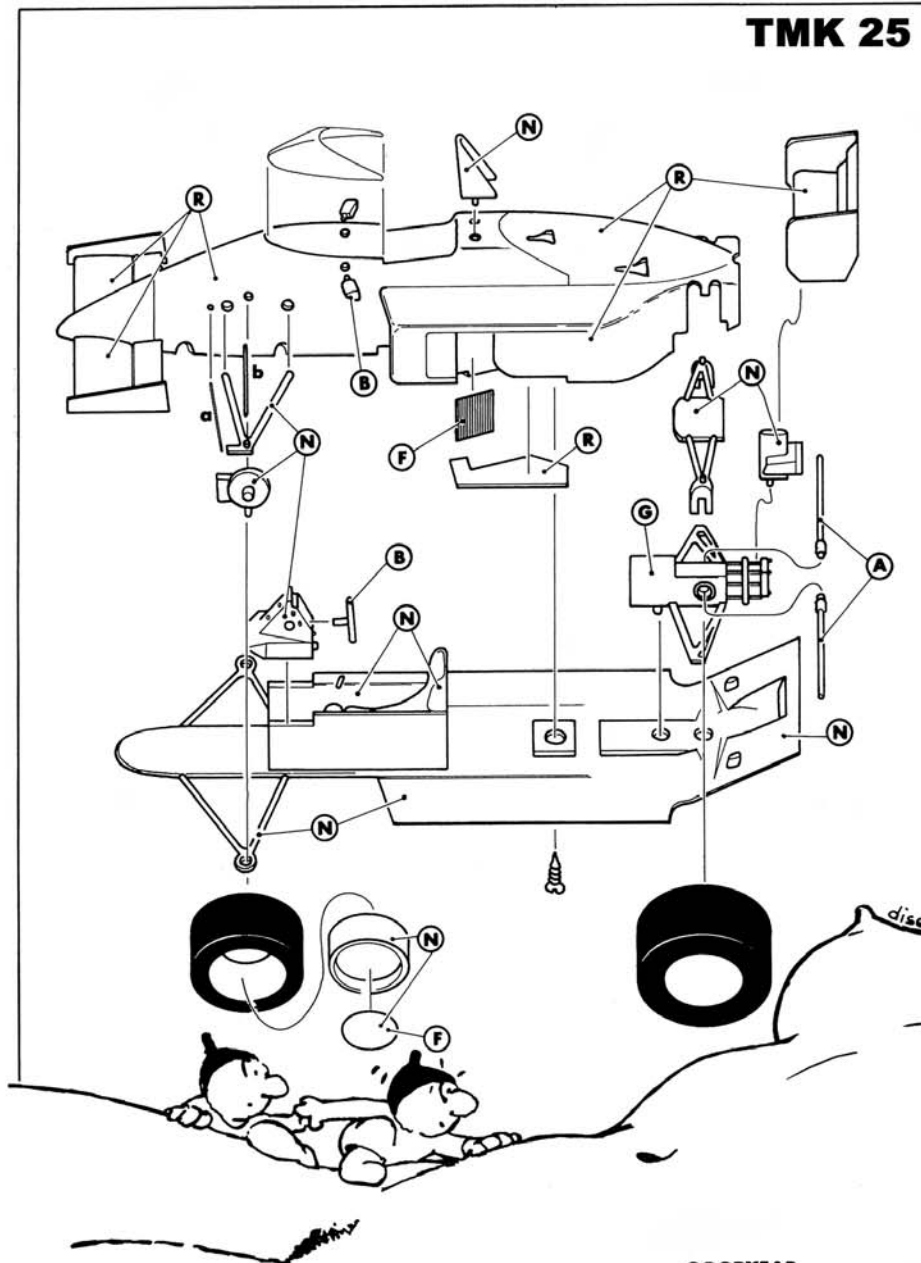
TMK 25

TAMEO CIT

PROTOTIPO : LUCA TAMEO
 FUSIONE :
 DECALS : CARTOGRAPH
 ASSIST : UB 40

COLORI

R - ROSSO CORSA FIAT 120
 N - NERO OPACO DUPLI 77-051
 A - ARGENTO HUMBROL N 11
 G - GUN METAL HUMBROL N 53
 B - BLU SCURO HUMBROL N 14
 F - FOTOINCISIONE

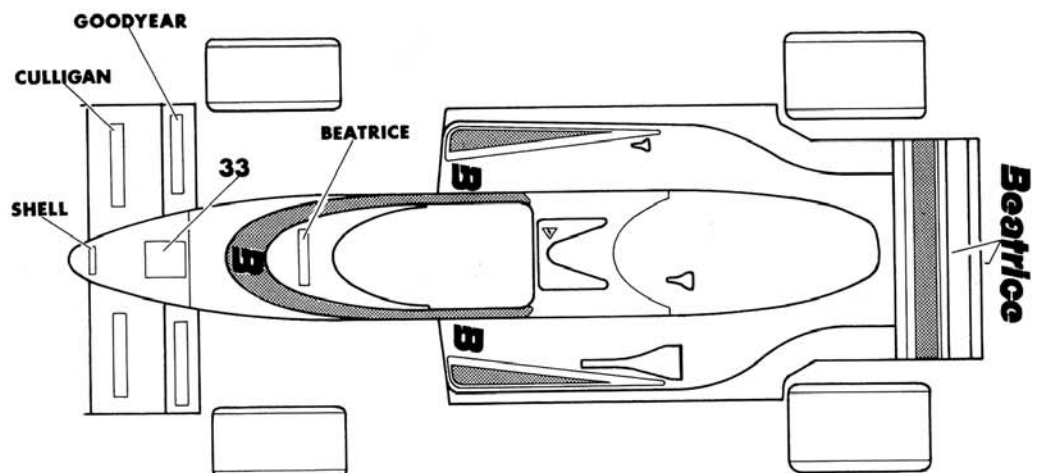
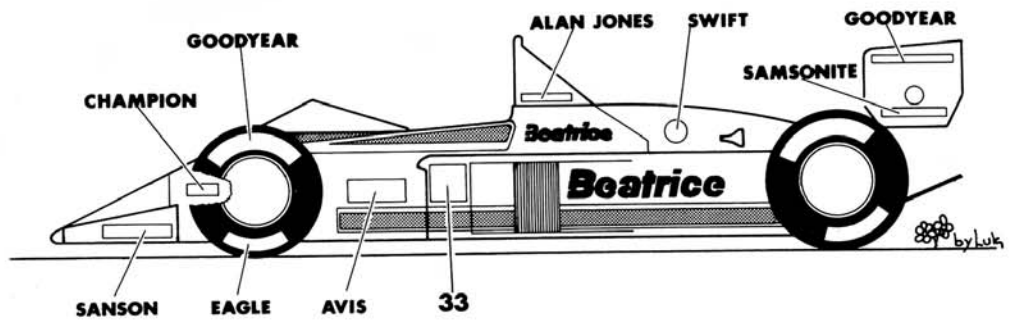


DOCUMENTAZIONE

- AUTOSPRINT N 37/38 1985
- ROMBO N 37 1985
- AUTO CAPITAL N 10 1985
- LUCA TAMEO PROVE G.P.ITALIA 1985

G.P.ITALIA 1985 MONZA

N 33 - Ret. ALAN JONES



- a - Filo di rame mm.0.5
- b - Filo di rame mm. 1



Si ringrazia il Sig. NIGEL WOLLHEIM e la scuderia BEATRICE per la collaborazione.