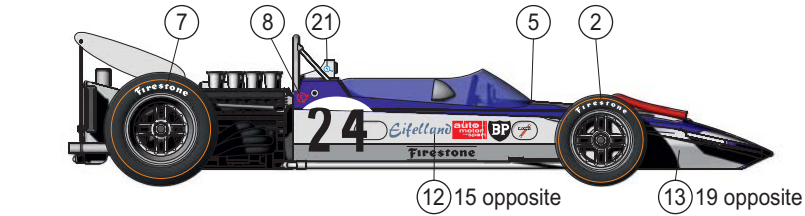
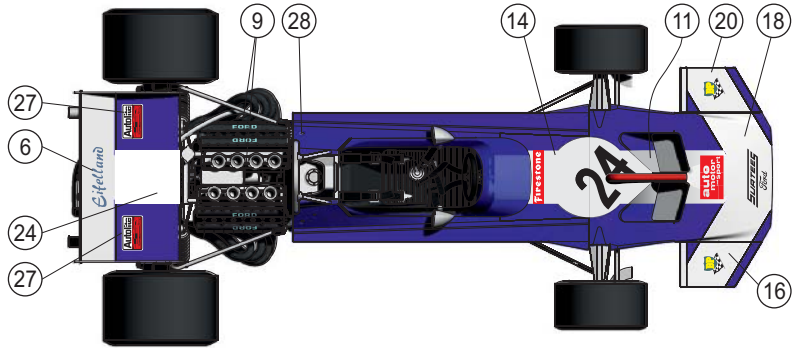


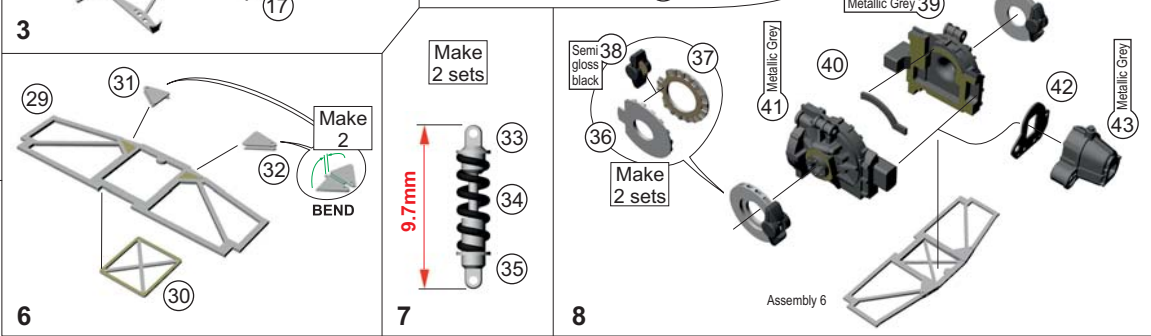
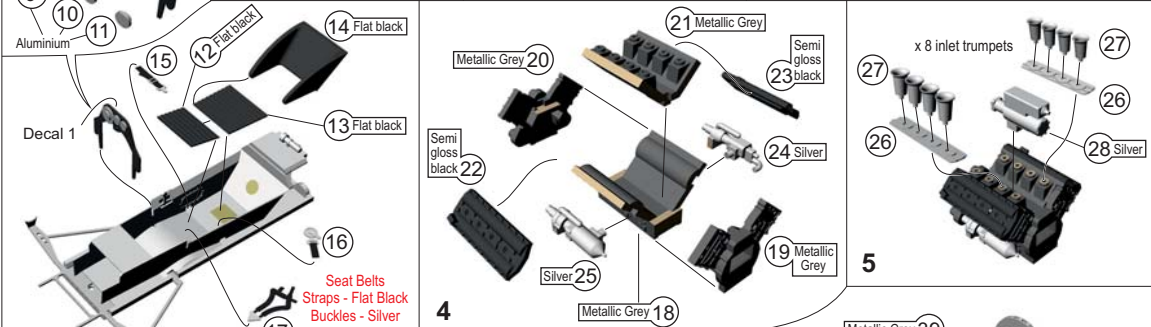
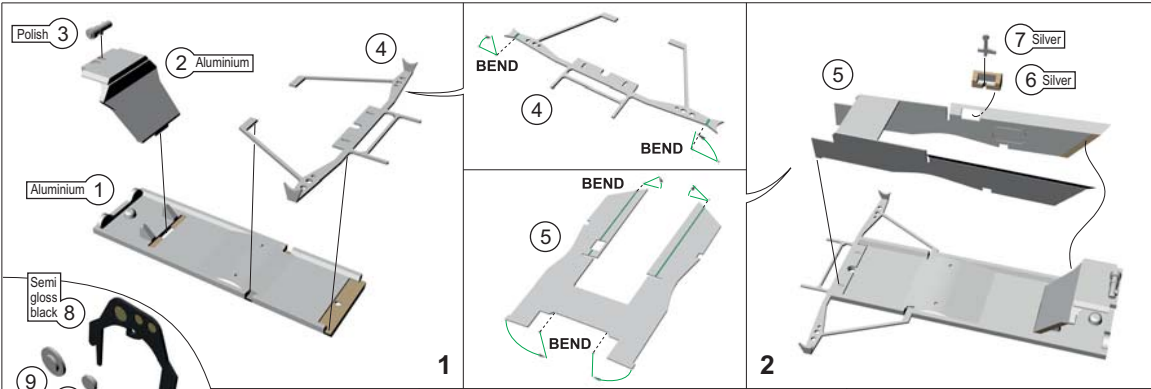
TWU 071 Surtees TS9 1971 Monaco GP - Rolf Stommelen

1/43rd Scale White Metal Kit - Collectors model. Not suitable for small children



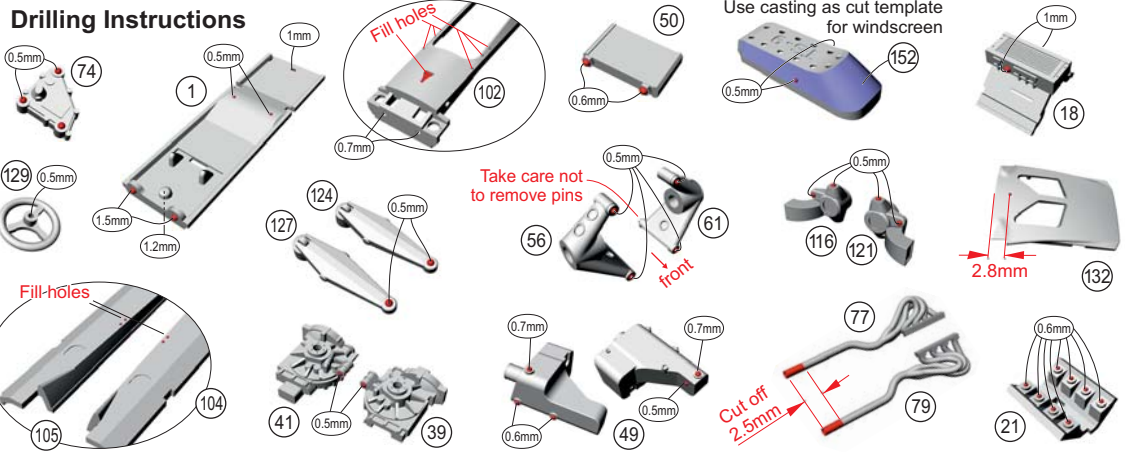
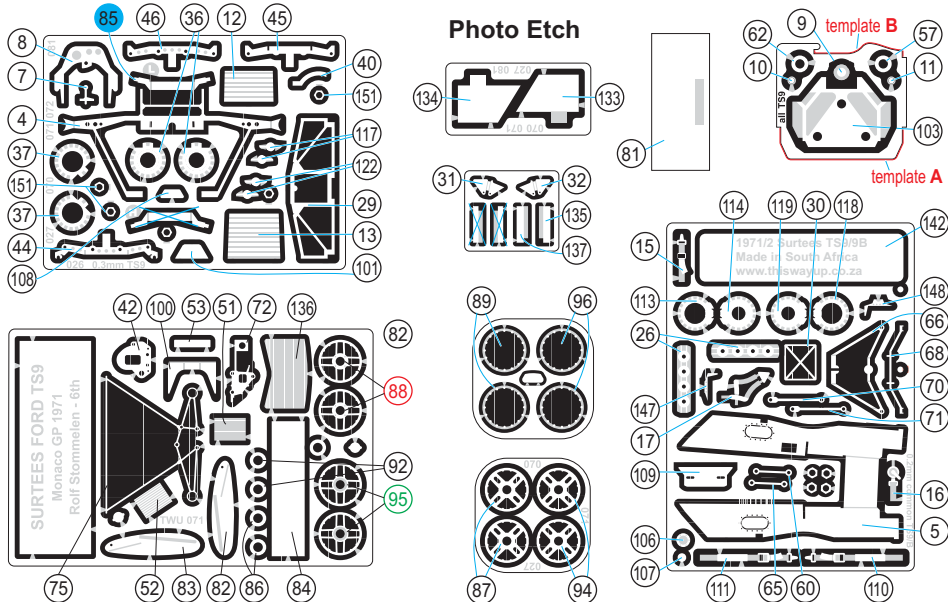
Paint

- TS15 blue
- TS26 white
- XF1 flat black
- XF7 flat red
- XF16 aluminium
- XF19 grey
- XF56 metallic grey
- X11 silver
- X10 gun metal
- X18 semi-gloss black
- X31 titanium gold



A second TS9 car was ready for Rolf Stommelen by the Spanish GP. At the next race, the Monaco GP, he qualified in 16th position and finished in 6th place, scoring the first points for Surtees in the 1971 season. The Stommelen car had the same blue and white colour scheme as the car driven by John Surtees, but displayed the names of his personal sponsors, Eiffelrand Caravans and Auto Motor und Sport instead of the Brooke Bond Oxo Rob Walker sponsorship on the sister car.

Rolf Stommelen's only other points finish for the season came at the British GP where he finished in 5th position.



9

2.50
1.25
Glue, then paint aluminium
Keep slots clear for wing support
cut 2 wires 0.6 x 2.5mm
BEND
BEND

10

Leave 0.5mm between radiator and tank
Aluminium 49
cut 2 wires 0.6 x 2.5mm
Semi gloss black 52
Semi gloss black 53
Semi gloss black 51
Semi gloss black 54
Semi gloss black 55

11

Make 2 titanium gold 56
Semi gloss black 58
titanium gold 57
Polished 64
Polished 59
Semi gloss black 63
titanium gold 61
titanium gold 62
temporary Ø 0.6 wire no glue!
temporary no glue!

12

BEND

13

Ø 0.6mm wire x 29.4mm Bend in template A
Tank last
Decal 26 Sky Grey 73
Decal 22 Metallic Grey 74
Decal 70
Decal 72

14

Flat Black
Polished 77
Polished 79
Ø 0.6 x 14.8mm cut wire x 2 78
Polished 76

15

White 84
Decal 24
White 82
White 83
Blue 81 Underside of wing white
BEND 85

16

spokes semi gloss black
Make 2 Sets Rear
semi gloss black 88
semi gloss black 92

17

Make 2 Sets Front
semi gloss black 97
semi gloss black 99

18

BEND
half etch on underside
assemble & paint white

19

First glue 102-105 then paint blue & decal
Aluminium
White 103
Decal 15
Decal 14
Decal 12
Decal 104
Decal 102
Decal 105

20

Seat Belts Straps flat black Buckles silver
Decals 10
Aluminium
Flat black 108
Aluminium 107
Aluminium 109
Aluminium 110
Aluminium 111
Aluminium 112

21

Semi gloss black 120
Aluminium 121
gun metal 117
gun metal 113
Semi gloss black 114
Semi gloss black 115
Aluminium 116
gun metal 118
gun metal 122

22

cut wire Ø 0.6 x 4.5mm
Decal 4 Flat black 129
Ø 0.6 x 7.5mm cut wire 125
Aluminium 126
Aluminium 127

22

Join 131 & 132. Paint. Then glue 136 to 135 and insert into assembly.
Decal 3 Flat Red 139
Decal 18 Blue 132
Decal 20 Blue 134
Decal 11 Blue 135
Decal 16 Blue 133
Decal 137 Blue 131

23

Polished 140
Polished 141
Polished 143
Ø 0.6 x 6.2mm cut wire x 2 145
Polished 144
Polished 146
Ø 0.7 x 26mm Bend in template B

24

Bend Lead Wire Ø 0.7 x 36mm 149
Polished 148
Polished 147

25

Semi gloss black 150
Semi gloss black 150
Semi gloss black 150
Semi gloss black 150
Decals 17
Polished 154
Semi gloss black 151

TWU071

Surtees TS9



Rolf Stommelen
1971 Monaco GP
1:43rd scale white metal kit

DISTRIBUTED by



Colour conversion - Conversione colori - Farbenumwandlung Conversion de couleurs - Colores convensionados

 BLUE BLU BLAU BLEU AZUL TAMIYA TS15	 WHITE BIANCO WEISS BLANC BLANCO TAMIYA TS26	 FLAT BLACK NERO OPACO MATT SCHWARZ NOIRE OPAQUE NEGRO OPACO TAMIYA XF1	 FLAT RED ROSSO OPACO MATT ROT ROUGE OPAQUE ROJO MATE TAMIYA XF7	 ALUMINIUM ALLUMINIO ALUMINIUM ALUMINIUM ALUMINIO TAMIYA XF16	 GREY GRIGIO GRAY GRIS GRIS TAMIYA XF19
 METALLIC GREY GRIGIO METALLIZZATO METALLISIERT GRAY GRIS METALISE GRIS METALIZADA TAMIYA XF56	 SILVER ARGENTO SILBER ARGENT PLATA TAMIYA X11	 GUN METAL GRIGIO FUCILE GUN METAL GRIS FUSIL GRIS FUSIL TAMIYA X10	 SEMI GLOSS BLACK NERO SEMI LUCIDO HALBGLANZSCHWARZ NOIR SEMI BRILLANT NEGRO SEMIBRILLANTE TAMIYA X18	 TITANIUM GOLD ORO TITANIO TITANGOLD OR TITANIQUE ORO TITANIUM TAMIYA X31	

PHOTOETCH
FOTOINCISIONI
FOTOGEAETZT
PHOTOGRAVURES
FOTOGRAVADO

STEEL WIRE
FILO D' ACCIAIO
STAHL DRAHT
FIL ACIER
ALAMBRE D'ACERO

STRAPS
CINGHIE
RIEMEN
BRETELLES
CORREAS

BUCKLES
FIBBIE
SCHNALLEN
BOUCLES
HEBILLAS

Ø DIAMETER
DIAMETRO
DURCHMESSER
DIAMETRE
DIAMETRO

BEND
PIEGARE
BIEGEN
PLIER
DOBLAR

CUT OFF
TAGLIARE
ABSCHNITTEN
DECOUPE
PIEZAS

Fill holes
Riempire i fori

Use casting as cut template for windscreen
Usare la fusione come dima di taglio per il vetrino

Take care not to remove pins
Attenzione a non rimuovere i pini

Glue, then paint aluminium
Incollare e dopo verniciare in alluminio

Make 2 sets
Fare 2 set

Keep slot clear for wing support
Mantenere le fessure libere per il supporto dell'ala

Leave 0.5mm between radiator and tank
Lasciare 0.5mm tra radiatore e serbatoio

Temporary Ø0.6mm, no glue!
Filo Ø0.6mm temporaneo, non incollare!

Bend in template A
Piegare nella la sagoma A

Underside of wing white
Parte inferiore dell'ala: bianco

Assemble and paint semi gloss black
Assemblare e verniciare nero semi lucido

Half etch on underside
Mezza incisione verso il basso

Assemble and paint white
Assemblare e verniciare bianco

First glue 102-105 then paint blue & decal
Incollare 102-105, verniciare in blu e applicare decal

Join 131 & 132. Paint. Then glue 136 to 135 and insert into assembly.
Unire 131 e 132. Verniciare. Incollare 136 su 135 e inserire nel montaggio

TAMEO KITS srl
Via Valle, 111 - P.O. Box 61
17022 BORGIO VEREZZI SV ITALY
Tel. 39 019 - 615.250
Fax. 39 019 - 615.310

www.tameokits.com
sales@tameokits.com
technical@tameokits.com

Made in Italy. Modello per collezionisti in scala 1/43. Vietata la vendita ai minori di 14 anni. Nocivo per ingestione. Conservare fuori dalla portata dei bambini. Tameo Kits declina ogni responsabilità per un uso improprio del prodotto.

Made in Italy. Collector 1/43 Scale Models. Not for sale to persons under 14 years of age. Dangerous if swallowed. Keep out of reach of children. Tameo Kits not held responsible for any damage or injury resulting from improper use of the product.

Made in Italy. Modèle pour collectionneurs échelle 1/43. Vente interdite aux enfants de moins de 14 ans. Dangereux si avalé. Conserver hors de la portée des enfants. Tameo Kits décline toute responsabilité dans le cas de dommages dérivants de l'usage non approprié du produit.

Made in Italy. Sammlermodell im Massstab 1/43. Verkauf an Jugendliche unter 14 Jahren verboten. Schädlich bei Verschlucken. Tameo Kits lehnt jede Verantwortung bei unsachgemässer Benutzung des Produktes ab.

Hecho en Italia. Colección de modelos a escala 1/43. Prohibida la venta a menores de 14 años. No comestible. Mantener fuera del alcance de los niños. Tameo Kits no se hace responsable de los daños causados por el uso incorrecto de este producto.